



# PUMP PERFORMANCE

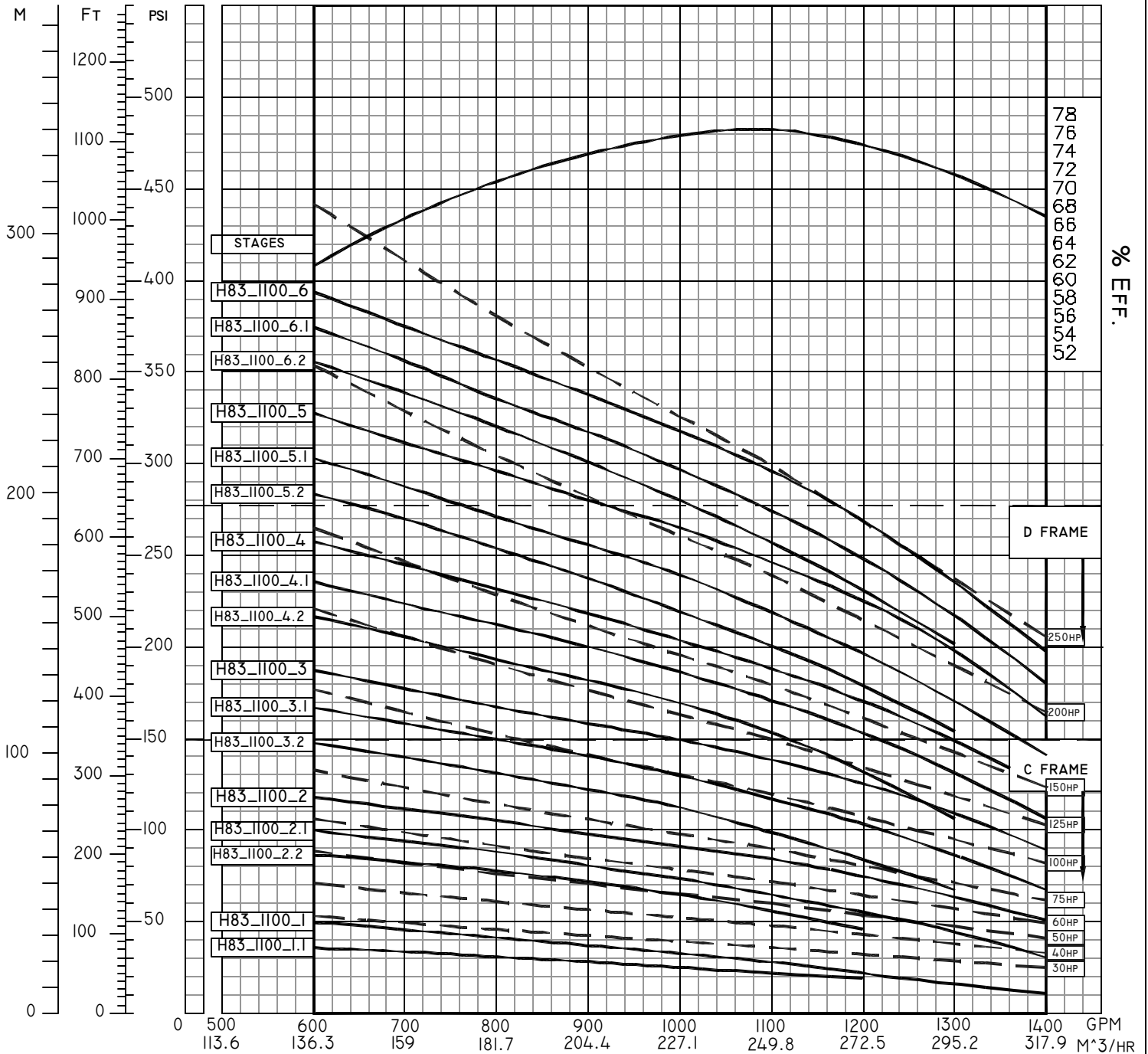
H83 SRC SERIES

$$HP = \frac{[GPM \times (PSI \times 2.31)]}{3960 \times \text{EFFICIENCY}}$$

1100 GPM #1100  
3600 RPM 460V 3 Ø 60HZ

FLOW RANGE: 600 - 1400  
OPERATE WITHIN DESIGNATED  
AREA ONLY

IMPORTANT : 10 PSI MINIMUM INLET PRESSURE  
REQUIRED. FOR GRAVITY FEED APPLICATIONS  
CONTACT FACTORY  
FEED WATER NOT TO EXCEED 85 °F. FOR HIGHER  
WATER TEMPERATURES CONTACT FACTORY.  
PERFORMANCE @ 70 °F WATER TEMPERATURE, 1.0  
SP. GRAVITY.



PERFORMANCE IS BASED ON 3600 (NOMINAL) RPM, 60 HZ MOTOR. THESE PUMP CURVES AND ANY INDIVIDUAL CURVES, WHICH ARE AVAILABLE UPON REQUEST, ARE TYPICAL ONLY AND ARE NOT GUARANTEED AS MINIMUM PERFORMANCE. IF EXACT FLOW AND PRESSURE ARE REQUIRED, A CERTIFIED CURVE MAY BE ORDERED AT ADDITIONAL COST IF ACCOMPANIED BY AN ORDER AND ONLY AFTER PUMP HAS BEEN TESTED.

MANUFACTURED BY : T&T PUMP Co. INC.  
10/8/98 RT 8 Box 343  
FAIRMONT, WV 26554



SPECIFICATIONS SUBJECT TO  
CHANGE WITHOUT NOTICE